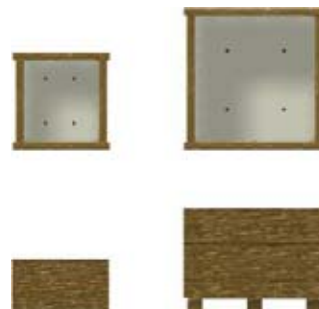
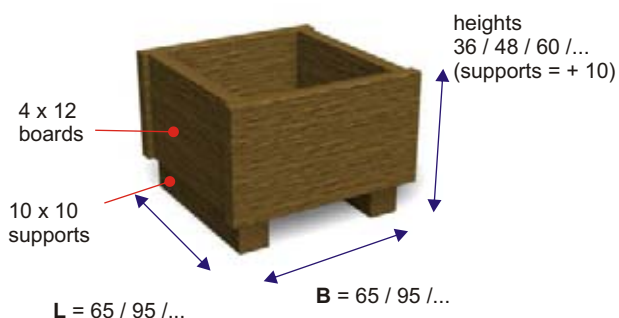


**flower box ROTTERDAM Basic**



useful planting depth :  
 models without supports = height -1 cm  
 models with optional supports = height -11 cm



without supports

65 x 65 x 36	43 kg
65 x 65 x 48	54 kg
65 x 65 x 60	66 kg
95 x 95 x 48	83 kg
95 x 95 x 60	101 kg

with supports

65 x 65 x 46	53 kg
65 x 65 x 58	64 kg
65 x 65 x 70	76 kg
95 x 95 x 58	105 kg
95 x 95 x 70	123 kg

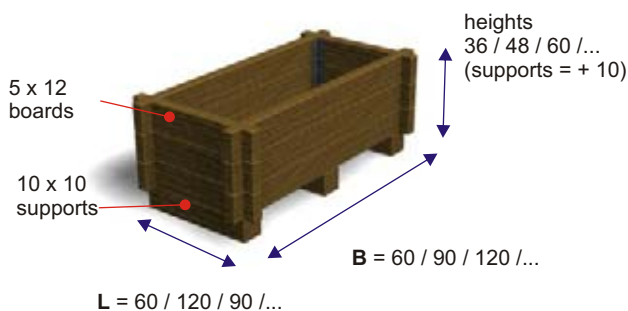
**Description**

The flower box is made of 4 x 12 cm boards, mounted together at the ends at right angles. The bottom is made up of a 10 mm thick recycled sheet, provided with drainage holes. In the model with optional supports, the bottom plate is supported by the supports.

**flower box BERLIN**



useful planting depth :  
 models without supports = height -12 cm  
 models with optional supports = height -11 cm



without supports

60 x 60 x 36	43 kg
60 x 60 x 48	56 kg
60 x 60 x 60	69 kg
60 x 120 x 48	84 kg
60 x 120 x 60	100 kg
90 x 90 x 48	84 kg
90 x 90 x 60	101 kg

with supports

60 x 60 x 46	53 kg
60 x 60 x 58	66 kg
60 x 60 x 70	69 kg
60 x 120 x 58	99 kg
60 x 120 x 70	115 kg
90 x 90 x 58	105 kg
90 x 90 x 70	123 kg

**Description**

The flower box is made 5 x 12 cm boards, that have been half milled out at the ends and fit together log cabin style. These boards are kept together on the inside by means of metal corner profiles. The bottom is made up of a 10 mm thick recycled sheet, provided with drainage holes, and is supported underneath by a cross bar. In the model with optional, the bottom plate is supported by the supports themselves.

**properties / material / look / maintenance**

The boards are made of high quality recycled plastic, mass coloured : durable, weather-resistant, low maintenance, rotproof, recyclable.

All metal fixing materials and parts are galvanised.

The surface is knot free, evenly coloured and shows a faced, slightly shining structure.

